



Safety Bay Primary School

Respect, Responsibility, Reflection, Relationships, Resilience

From the Principal

Newsletter 07
18 May 2016

Principal's Word

Over the last week the P&C have had to make some changes to both the running of the canteen and the uniform shop. Due to a large fall in sales in recess and lunch orders, there will be staff cutbacks. Lisa Rendell, our canteen co-ordinator has decided to pursue another career and will no longer be working in the canteen. We thank Lisa for her time and tremendous endeavours and the wonderful and positive manner in which she approached the role at all times. Bernice Shepherd will continue and move to full time. There will also be some menu changes, however the traffic light system used to ensure the supply of healthy food options will still continue.

Decisions regarding the uniform shop have also been made in the best interests of the P&C. A large surplus of uniforms has always been kept, which can no longer be maintained. A number of options are being looked at to reduce the surplus stock which will help.

The regular P&C meeting is to be held this Thursday 19th May at 1.30pm in the staff room if parents are wanting to ask questions about what is happening.

Not a Walkathon but an Obstacle Course

The P&C have decided to make a change to their annual Walkathon fundraiser. This is the biggest event for the P&C each year and, in the past, has had the greatest success. This year, to further encourage student participation and reward them for their efforts, the event will be an obstacle course. The date for the event is Friday 17th June and will involve the children seeking donations for completing the course. Prizes will be awarded to the students if they raise more than \$10, with the more they raise the more impressive the prize.

You should have received information about the event and how your child can fundraise but if you have any questions or concerns don't hesitate to contact Marleen Cleary or a P&C committee member.

School Break-ins

We have had several break-ins over the past week with computers and equipment being stolen. This is extremely disappointing and staff have been asked to be extra vigilant in storing equipment. If anyone has seen any unusual activity or heard something unusual please let the school know.

Kindergarten and Pre-Primary Enrolments

Just a reminder about Kindy and Pre-Primary enrolments. We have placed a sign up on the fence advertising enrolments which will close on the Friday 22nd July. Please find more details in the newsletter or contact the ladies in the office.

Playgroup

Last Friday 13th May the school provided a Playgroup opportunity for parents of pre-school age children, which was very successful. There were over 30 parents who attended bringing children along to experience an opportunity to spend with other families in similar situations to their own. The Safety Bay Playgroup is being conducted over three weeks to see the amount of interest after which a decision will be made regarding whether it continues. If you know of someone who has a pre-school age child, they are welcome to attend, it runs for the next two Friday mornings from 9.00am to 10.30am in our W8 classroom.

Quote: Children are the Priority. Change is the Reality. Collaboration is the Strategy.

Wayne McKay
Principal

School Security
1800 177 777

SMS Communication
For Absences
SMS Mobile
Number
0437 418 753

Safety Bay Primary
School Dental
Therapy Centre
9527 6767



2 Waimea Road, SAFETY BAY WA 6169
Ph: 08 9528 3680 Fax: 08 9592 4789
Website: www.safetybayps.wa.edu.au

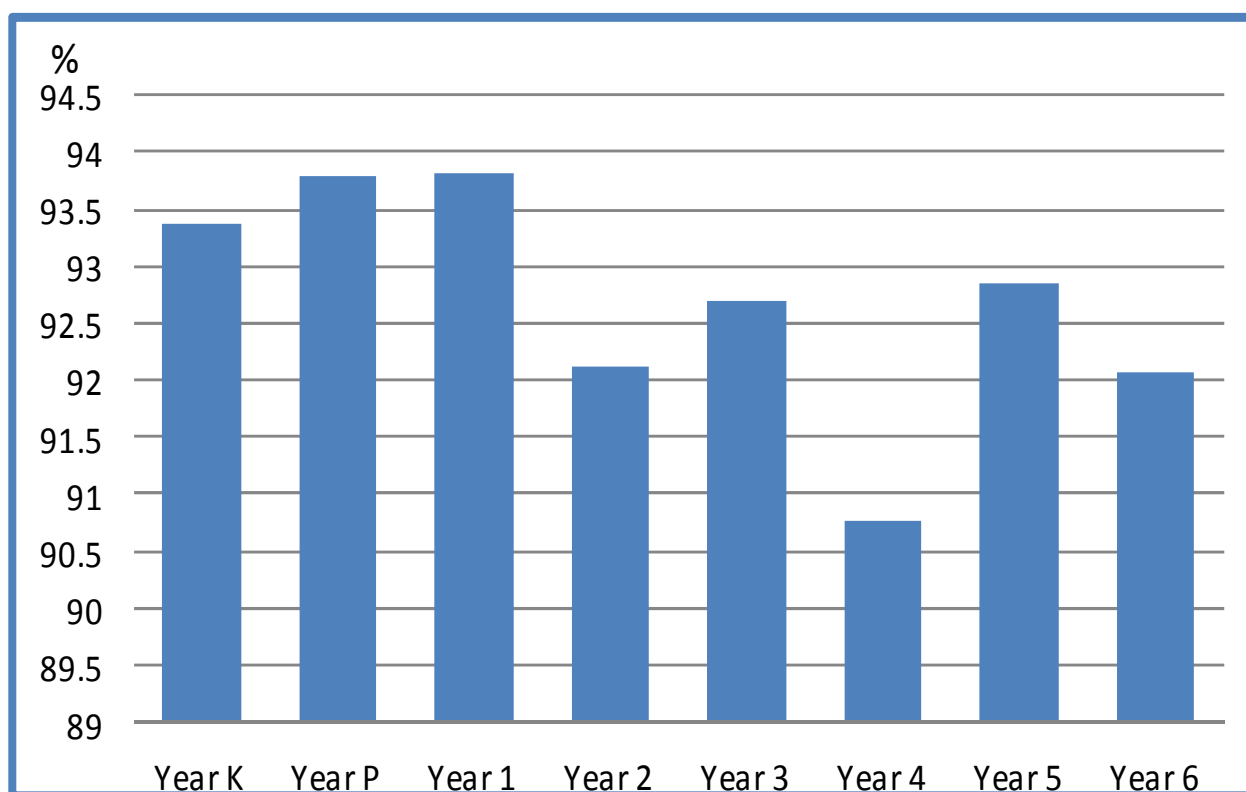


IMPORTANT DATES

Thursday 19 May	P&C meeting 1.30pm staffroom
Friday 20 May	S7—Whole School Assembly Friendlies Football & Netball vs Hillman Primary School 1.20pm—3.00pm
Monday 23 May	Science In School Performance S5, S4, P7, P8, C18, C20, C21
Tuesday 24 May	Science In School Performance S6, S3, P9, P10, C17, C19, C16 Year 6 CC Education In School Performance — Federation
Thursday 2 June	Year 6 CC Education Excursion—Parliament House
Friday 3 June	C15—Whole School Assembly

*****MONDAY 6TH JUNE—WA DAY HOLIDAY*****

YEAR GROUP % ATTENDANCE FROM 27th APRIL –13th MAY



FROG POND

Safety Bay Primary School are currently wishing to build a frog pond at the school. To achieve this we are asking if anyone in the community has any garden rocks that they could donate to this project. For more information about this project please see Mrs Sue McCulloch in C17.



LOST & FOUND

Have you lost a pair of reading glasses?

Last week a pair of glasses were found on the ground between Peron and Challenger blocks. If you think they may be yours please come to the office to claim.

Please remember to label all your child's school belongings and regularly check the lost property box outside the staff room for any lost belongings, as the weather is getting cooler, we are finding lots of jumpers and jackets that left lying around the school with out names on them.

Also, if you have lost any items, such as jewellery, purses, wallets or sunglasses please come and see if they may have been handed in to the school office.

KINDY & PRE-PRIMARY 2017

Applications for 2017 Kindy and Pre-Primary are now available and can be made at the school office or can be [downloaded](#) from the Safety Bay Primary School website. We encourage all parents to submit their applications before the end of Term 2, Friday 1st July. **Applications close Friday 22nd July 2016.**

Parents, please note that students currently enrolled in Kindy at Safety Bay Primary School will need to re-enrol their child for 2017 Pre-Primary by completing a new application.

Kindergarten – How are public school enrolments prioritised?

If the number of children applying to enrol at a Kindergarten or Community Kindergarten with a local-intake area exceeds the number of available places, enrolments are prioritised in this order:

- A child who lives in the local-intake area of the school, who has a sibling enrolled at the school for that year and who lives closest¹ to the Kindergarten.
- A child who lives in the local-intake area of the school, who does not have a sibling enrolled at the school for that year and who lives closest¹ to the Kindergarten.
- A child who does not live in the local-intake area of the school, who has a sibling enrolled at the school for that year and who lives closest¹ to the Kindergarten.
- A child who does not live in the local-intake area of the school, who does not have a sibling enrolled at the school for that year and who lives closest¹ to the Kindergarten.

If the number of applications exceeds the number of available places at a Kindergarten or the Kindergarten's local school is not a local-intake school, priority for enrolment is given to children who live closest¹ to the Kindergarten.

Kindy Enrolment FAQs

<http://det.wa.edu.au/schoolsandyou/detcms/navigation/your-childs-education/enrolling-in-school/>

For updated information regarding immunisation for your Kindy or Pre-Primary enrolment, please visit the link below.

http://www.public.health.wa.gov.au/1/51/2/immunisation_for_community.pm

P&C NEWS



OBSTACLE COURSE FUNDRAISER

EXCITING NEW EVENT on **Friday 10th June** we are holding the first ever Safety Bay Primary School Obstacle Course fundraiser. We are encouraging as many parents as possible to come for the morning to support the kids. This year the P&C is using an online fundraising company and the P&C is very impressed with the company. Parents can open an account for their child online. Once the child's account is open, a link to that account can be emailed to family and friends in Australia and all over the world.

CANTEEN CHANGES

Over the next couple of months there is going to be many changes to the Canteen and Uniform shop. The P&C is sad to announce that Lisa Rendell has resigned from the Canteen. Lisa's last day will be this Friday 20th May 2016. With the decrease in lunch orders, the P&C has decided not to fill Lisa's position. We are urging all parents in the school community to see Bernice in the canteen and sign up to volunteer even if it's only for an hour once a month. The canteen menu is under review and changes are expected.

UNIFORM SHOP

Effective Monday 23rd May 2016 the **uniform shop will ONLY be open on Tuesdays from 2.30pm to 3.30pm** or by appointment. The uniform shop is now being operated by four P&C volunteers. We will be advising all parents that they need to order their summer and winter uniforms when the pre-order forms handed out to families. As a result of the uniform shop having a massive overstock of uniforms and accordingly we need to drastically reduce stock, over the next couple of weeks the uniform shop will be having a couple of massive sales to clear out all bottoms.

P&C MEETING

The next P&C meeting will be this Thursday 19th May 2016 at 1.30pm in the staffroom. Everyone is welcome to attend and we would love to see you there!

Jill Erikssen
P&C President



**UNIFORM SHOP OPENING
HOURS
TUESDAY
2.30PM—3.30PM
OR
BY APPOINTMENT**

Managing Behaviour

What promoting positive behaviour involves

Parents and carers who provide boundaries as part of a loving and secure relationship with their children help children feel secure and self-confident. Children benefit from knowing that their environment is stable and that a competent adult is taking care of them.

There are three aspects to promoting positive behaviour:

1. A learning environment that is positive and supportive
2. Strategies for building skills and strengthening positive behaviours
3. Strategies for decreasing undesired behaviours

1. Positive and supportive environments for learning

- Building strong parent/carer-child relationships
- Quality time
- Positive attention

2. Strategies for building skills and strengthening desired behaviour

- Praise
- Rewards
- Routines
- Setting expectations and limits
- Giving choices

3. Strategies for decreasing undesired behaviours

Children can behave in undesired ways for many reasons. They may not have learned what the appropriate behaviour is, they may not have learned how to manage feelings such as frustration or anger, or they may feel confused or insecure in an unfamiliar situation. Parents and carers may unintentionally contribute to the pattern of undesired behaviours by giving children attention when they occur. The most effective way to reduce undesired behaviour is to help your child learn an appropriate behaviour to replace it with. Teach children what it is you want them to do and provide them with rewards and positive attention for doing it. Shift your focus to the positive behaviour and avoid giving attention to the undesired behaviour. If necessary, apply logical consequences when undesired behaviour occurs. Maintain your calm when following through with consequences to ensure the child understands your intention.

- Quiet time

Keys to promoting positive behaviours

- Prevention is better than cure
- Be firm but fair
- Keep cool
- Teach rather than punish

Please click link to read the complete document on [Managing Behaviour](#).

Our kids matter.

KidsMatter helps our school nurture
happy, balanced kids.

Kids Matter

Australian Primary Schools
Mental Health Initiative

kidsmatterprimary.edu.au

2016-2017 ENTERTAINMENT BOOK



Entertainment Books available at office or [online](#) - Help us fundraise!
Order a Perth Membership before June 1st 2016 to win a trip to Bali
valued at over \$5,000 which includes:

- 5 nights in a Deluxe Suite at Double-Six
- Dinner for two at Mozaic Beach Club
- Garuda Airlines flights (sponsored by Woolworths)
- Family Day Pass at Waterbom Park
- QBE Travel Insurance
- 2 Massage vouchers at Prana Spa Bali

COMMUNITY NEWS

NOTICES FROM OUR COMMUNITY:
Safety Bay Primary School does not endorse nor assume any responsibility for the information provided.

a CDP production

a play by **RICHARD TULLOCH** adapted from the book
by **ANDY GRIFFITHS & TERRY DENTON**

The 52-STOUREY TREEHOUSE

LIVE ON STAGE!

Mandurah Performing Arts Centre
Friday 1 July at 7pm & Saturday 2 July at 2pm
Special offer—\$15 tickets for school families
To be eligible to receive the special offer price please quote school name
Box Office 9550 3900 www.manpac.com.au

MANDURAH PERFORMING ARTS CENTRE
Box office (08) 9550 3900 www.manpac.com.au

Kids cdp.com.au

Government of Western Australia
Department of Health
Child and Adolescent Health Service

Triple P
for every parent

FREE POSITIVE PARENTING PROGRAM

You are invited to attend a Group Triple P - Positive Parenting course. Triple P teaches positive, practical and effective ways to manage common issues which most parents will face.

Parents will learn effective parenting strategies such as ways to encourage behaviour you like, how to promote your child's development and how to prevent or manage common child behaviour problems.

The next **FREE** 8 week Group is held:

When: 28 Jul – 15 Sep 2016
Location: Rockingham
RSVP: Bookings are essential and places are limited.

Please call Joanne on 9419 2266 or email joanne.mcguinness@health.wa.gov.au for more details or to book your place.

To find other available programs visit our website www.healthywa.wa.gov.au/Triple_P

Please join us at the
NEW
Safety Bay Family Playgroup

A Playgroup for children aged 0-4 and their families.

Where: Safety Bay Primary School – W 8
When: Commencing Friday 13th of May, 9:00-10:30am for a 3-week trial.

Please bring a hat & a piece of fruit to be shared.

At Playgroup ...

- You can have fun playing with your child
- You can meet other parents
- Your child can become familiar with the school environment ready for future years.

For more information, please call Safety Bay PS Reception: 9528 3680

Playgroup
WA (Inc)

Can Saver Plus assist you with school costs?

Join Saver Plus and match your savings, dollar for dollar, up to \$500 for educational costs including:

- school uniforms and text books
- computers, laptops and tablets
- excursions and camps
- sports equipment, uniforms and lessons
- music tuition and instrument hire.

You may be eligible if you have a Health Care or Pensioner Concession Card, are at least 18 years old, have some regular income from work (you or your partner), such as full-time, part-time, casual or seasonal work, and have a child at school or study yourself.

Contact Jacqui Brooker your local Saver Plus Worker:
(08) 9265 5585 / 0418 663 585
or jacqueline.brooker@thesmithfamily.com.au

Saver Plus was developed by ANZ and the Brotherhood of St Laurence and is delivered across Kwinana and Rockingham by The Smith Family. The program is funded by ANZ and the Australian Government.

*Thank you to our sponsors.
The following are paid advertisements. Safety Bay Primary School does not endorse nor assume any responsibility for the information provided.*



MALIBU PHARMACY

For Friendly Personalised Service

OPEN

Mon - Fri 8.30 - 6.00pm
Saturday 8.30 - 3.00pm

(08) 9527 7013

Shop 3, Malibu Shopping Centre. 110 Malibu Rd, Safety Bay, WA 6169

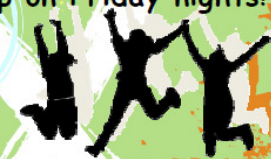
PRIMARY AGE YOUTH GROUP

Come along to Youth Group on Friday nights!

Enjoy games, make friends,
learn Scripture, eat supper.
(Planned and supervised)

Who: Years 1-6
When: Friday nights, 6-7:30pm (school terms)
Cost: \$2 donation p/child (or \$4 p/family)
Dress standard: Casual (neat and respectable)
Where: Rockingham Church of Christ,
cnr Rae Rd & Frederick St, Safety Bay

9592 2495 www.rockinghamcofc.org.au




Your Local Garage Door Specialist

1800 202 808 No Call Out Fee


- ✓ Sales & service specialist
- ✓ Emergency repairs
- ✓ All brands of doors & motors repaired



Marleen Cleary Sales Consultant

m: 0400 848 447
p: (08) 9591 4999
f: (08) 9591 4900
e: marleen.cleary@profrh.com.au


8 livingstone road
rockingham wa 6168
www.profrh.com.au

SHOALWATER MEDICAL CENTRE

MODERN STATE OF THE ART CENTRE

GENERAL PRACTITIONERS, PHYSIOTHERAPY,
WESTERN DIAGNOSTIC PATHOLOGY AND MORE.



Open MONDAY to FRIDAY 8AM-7.30PM,
SATURDAYS 8.30AM-4PM BULK BILLING
www.shoalwatermedicalcentre.com

NOW OPEN

40 COVENTRY ROAD, SHOALWATER WA 6169 (CNR COVENTRY ROADS) **9527 2236**

FunTalk
Speech Pathology Services

Fun and interactive Speech Pathology services for children!

Phone: 9439 2333
0438 861 555

2 Chilcott St, Calista WA
www.funtalk.com.au



ROCKINGHAM FOAM SUPPLIES

NEW & RECOVERED LOUNGE SUITES FOAM CUT TO SIZE WHILE YOU WAIT

MATTRESSES UPHOLSTERY SUPPLIES POLYSTYRENE

Unit 1, 15 Dixon Road Rockingham.
Ph: 9527 2374